



LIGHTING DESIGN

29th St. Pedestrian Bridge

NOVEMBER 8, 2017



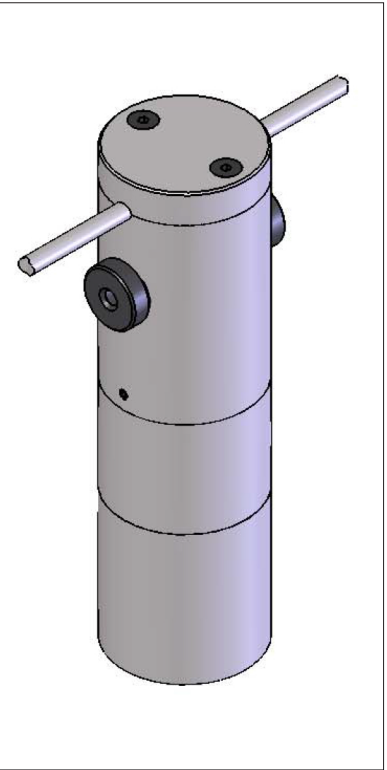
PROPOSED LIGHTING CONCEPT RENDERING





LIGHTING CONCEPT PRECEDENT



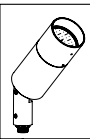
A COLOR-CHANGING LED UPLIGHT AT VERTICAL AND DIAGONAL MEMBERS CONCEALED BEHIND RAILING



B CATENARY CABLE MOUNTED DOWNLIGHT



Tunable White + Saturation & Hue



PROJECT:

TYPE:

CATALOG NUMBER:

SOURCE:

NOTES:

CATALOG NUMBER LOGIC

Example: DE - LED - C20 - FL - BZP - 9 - 11 - A

Series: DE - Denali Series™ Floodlight

Source: LED - 'C' Module with Color Tuning Technology

LED Type: C20 - 20WLED/1650-4000K + Saturation and Hue (Bluetooth Installation)
C21 - 20WLED/1650-4000K + Saturation and Hue (0-10V Wired Installation)

Optics: SP - Spot (20°)
FL - Flood (40°)
WFL - Wide Flood (60°)

Finish: Standard Finish
Powder Coat Color: Bronze (BZP), Black (BLP), White (Gloss) (WHP), Aluminum (SAP), Verde
Satin: BZP, BLP, WHP, SAP
Wrinkle: BZW, BLW, WHW, VER

Premium Finish
ABP: Antique Brass Powder, AMG: Aleutian Mountain Granite, AQW: Antique White, BCM: Black Chrome, BGE: Beige, BPP: Brown Patina Powder, CAP: Clear Anodized Powder
CMG: Cascade Mountain Granite, CRI: Cracked Ice, CRM: Cream, HUG: Hunter Green, MDS: Mojave Desert Sandstone, NBP: Natural Brass Powder, OCP: Old Copper
RMG: Rocky Mountain Granite, SDS: Sonoran Desert Sandstone, SMG: Sierra Mountain Granite, TXF: Textured Forest, WCP: Weathered Copper, WIR: Weathered Iron

Configure Driver Housing Separately

Driver Housing Required

INTEGRAL DRIVER HOUSINGS:

- HP2 - HP2 Housing
- PM2 - Universal Power Module 2
- PM2D - Universal Power Module 2 Dual
- PC - Power Canopy
- PPII - Power Pipe II
- TMB - Pole Mount or Tenon Mount

REMOTE DRIVER HOUSINGS:

- HP2RM - HP2 Remote Housing
- PM2RM - Universal Power Module 2 Remote
- PM2DRM - Universal Power Module 2 Dual Remote
- RM - Remote Wall Mount
- DRM - Dual Remote Wall Mount

“A/D” CAP

“B/E” CAP

“C” CAP

iOS DEVICE (by Others)

LCT WIRELESS REMOTE

Accessories (Configure separately)

Driver Housings (Configure separately)

Mounting:

Canopies

Power Canopy™

Power Pipe II™

PM2D & PM2

HP2

TMB

HP2RM

PM2DRM & PM2RM

DRM & RM

Specifications

GreenSource Initiative™

Saturation and Hue

Materials

Body

Knuckle

Cap

Lens

Remote Driver

Optics

Water Management

Wiring

Hardware

Finish

Warranty

Certification and Listing

LM79 DATA

BK No.	Lumens (Source)	CCT (Typ.)	CRI (Ra. @3000K)	CRI (R9@3000K)	Input Watts (Varies through tunable range)
C20	1200	1650-4000K	90	90K	20W
C21	1200	1650-4000K	90	90K	20W

L70 DATA

Minimum Rated Life (hrs.) 70% of initial lumens (L70)
50,000
50,000

OPTICAL DATA

Beam Type	Angle	C20/C21 @4000K CBCEP
Spot	20°	2667
Flood	40°	1168
Wide Flood	60°	891

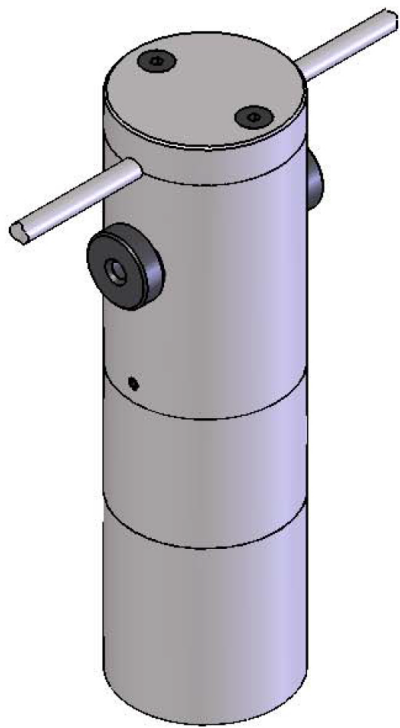
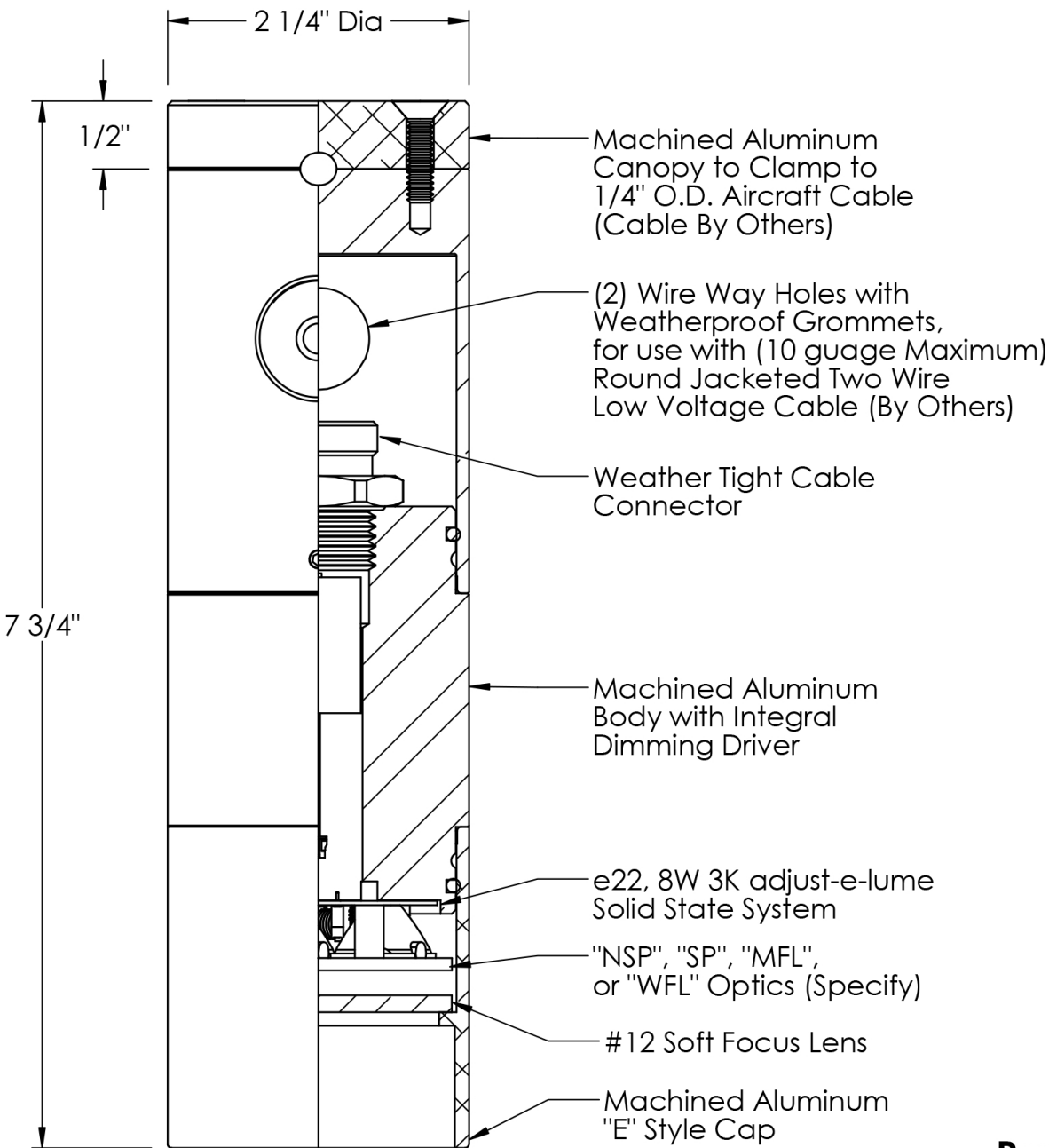
B-K LIGHTING

40429 Brickyard Drive • Madera, CA 93636 • USA
559.438.5800 • FAX 559.438.5900
www.bklighting.com • info@bklighting.com

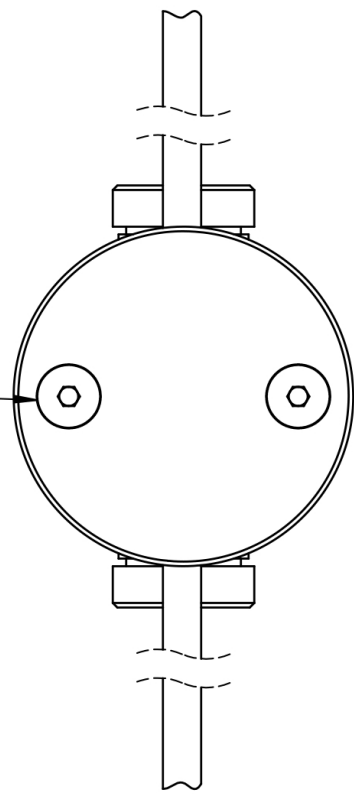
RELEASED 08-24-16

DRAWING NUMBER SUB-2409-00

A COLOR-CHANGING LED UPLIGHT AT VERTICAL AND DIAGONAL MEMBERS CONCEALED BEHIND RAILING



(2) Stainless Steel Screws with Black Oxide Finish



Top View

**Provide 12Volt A.C. Power
from Remote Magnetic Transformer**

Revision "B" 05/19/14

CATENARY CABLE MOUNTED SM-AR-LED FIXTURE

B-K LIGHTING, INC.

DRAWING NUMBER
CUS-1209-77

ALL DIMENSIONS INDICATED ON THIS SUBMITTAL ARE NOMINAL. CONTACT TECHNICAL SALES IF YOU REQUIRE MORE STRINGENT DIMENSIONAL SPECIFICATIONS.

THIS DOCUMENT CONTAINS PROPRIETARY INFORMATION OF B-K LIGHTING AND ITS RECEIPT OR POSSESSION DOES NOT CONVEY ANY RIGHTS TO REPRODUCE, DISCLOSE ITS CONTENTS, OR TO MANUFACTURE, USE OR SELL ANYTHING IT MAY DESCRIBE. REPRODUCTION, DISCLOSURE OR USE WITHOUT SPECIFIC WRITTEN AUTHORIZATION OF B-K LIGHTING IS STRICTLY FORBIDDEN.

